

### Indirect Vision and Points of View

Mirrors and Visual Display Units (VDUs) are great tools that help Heavy Vehicle drivers; however we should be aware of their potential risks in order to have the safest experience.

Empathy with other road users helps us understand different points of view and what others are thinking, helping us to be more considerate on the road.

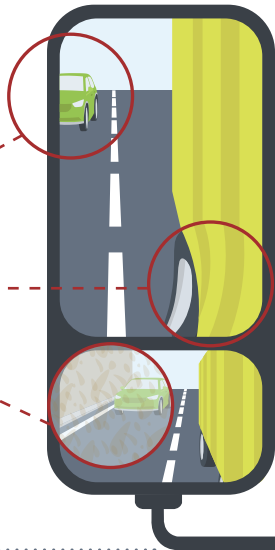
### Mirrors

#### Advantages

Shows what is not directly visible

#### Disadvantages

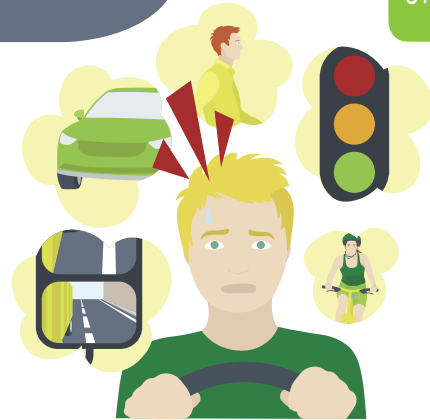
- Recognition compromised closer to edges
- Can distort objects
- View interfered by elements (e.g. rain, dirt)
- Incorrect setting up may provide inadequate vision



### Cognitive Load

It's hard to think about many things at once.

Mirrors and VDUs can increase cognitive load, affecting driving performance.



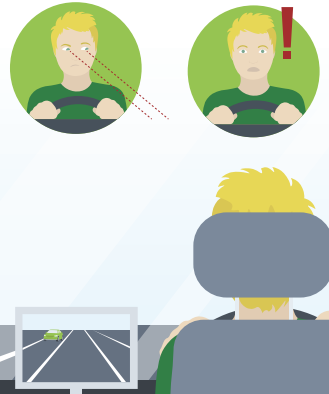
### VDUs

#### Advantages

- Extends Heavy Vehicle drivers' visual field
- Aids decision making

#### Disadvantages

- Increases off-road glancing and time taken when returning gaze to the road
- Image resolution affected by environmental conditions and colour range



### Points of View: What are they thinking?

All three road users agree that eye contact makes the road situation safer.



### Heavy Vehicle Drivers

Mirrors and VDUs provide sufficient view for me  
 VDUs have more advantages than disadvantages  
 Sometimes it's hard to recognise cyclists in my mirror  
 I'm not too high up to see VRUs  
 Bigger windows would help avoid incidents with VRUs



### Cyclists

Heavy Vehicle drivers may not see me through mirrors and VDUs  
 They would see me more easily if lower to the ground  
 They would see me more easily with larger windows  
 Eye-contact with Heavy Vehicle drivers makes me safer



### Pedestrians

Heavy Vehicle drivers may not see me through mirrors and VDUs  
 Lower cab height and larger windows would make safer trucks

