

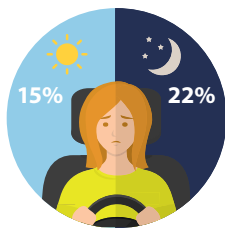
The question

How is the vision of a driver impacted by emotion, age, speed, time of day, and distance? This Quick Fact explores how these factors can impact a driver's vision, and consequently their safety, on the road.

Australian drivers and eyesight



19% of 35-54 year olds find it difficult to read road signs during the day, more than older drivers.



22% squint while driving at night, **15%** squint while driving during the day.

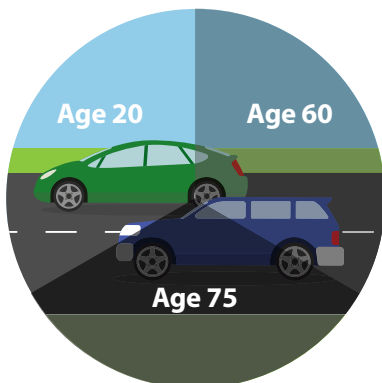
Emotion

Emotions affect how long we look at objects while driving, which means our response towards a hazard can be delayed.



Sadness can result in 'tunnel vision' and, to avoid the source of the sadness, **does not explore the environment.** This can increase the risk of a crash.

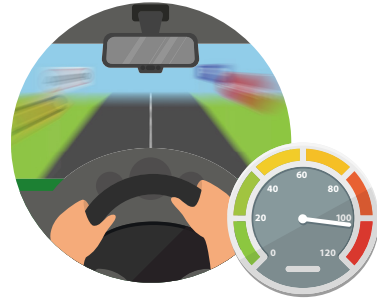
Age



Vision gradually declines as we age, which can reduce our ability to drive safely. Drivers aged over 75 represent a large proportion of the population involved in road crashes.

Speed

As speed increases, the useful visual field decreases.



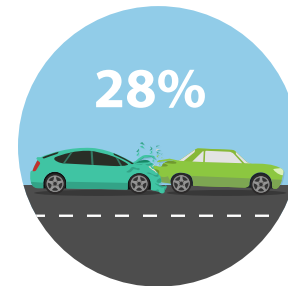
High speeds can reduce a driver's ability to recognise stimuli in their periphery.

Time of day

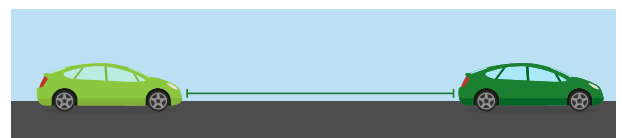


Road crashes are more frequent at night. **Fatalities are more likely to happen at night and dusk** than during the day.

Distance



28% of rear end collisions are caused by vehicles following too closely.



The shorter the following distance, the more 'visual attention' the driver devotes to the vehicle in front of them.