



# clocsh

A Snapshot



# CLOCS-A Champions

## Steering Group



## Supporting Partners



# 1 What is CLOCS-A?

Australian governments are committed to an expected \$290 billion in public infrastructure investment over the next 10 years — including an approximate doubling of investment over the next three years. This will mean a wave of construction projects mostly relating to transport, utilities and social infrastructure. Many of these projects will be in cities, towns and urban areas.

As a direct result of this increase in construction activity, the number of construction related heavy vehicle movements related to and in those project locations will also increase significantly.

Recognising that the movement of these construction vehicles in populated areas can present hazards for the public — particularly Vulnerable Road Users — both State and Commonwealth governments seek to prioritise and promote the use of safer heavy vehicles, improved driver standards, more effective logistics planning and greater engagement with the community on road safety initiatives.

Construction Logistics and Community Safety — Australia (“CLOCS-A”) is a national voluntary Standard developed with the primary aim of better managing the potential hazards created by the road transport and logistics activities associated with large construction projects.

Through the wider adoption of the CLOCS-A Standard across Australian construction projects and supply chains, it is expected that the risk of road trauma involving construction vehicles will be reduced and the efficiency of construction project logistics improved.

The primary aims of the CLOCS-A Standard is to help protect the public from harm and to improve the quality of construction logistics planning. It seeks to do so by:

- a. Establishing a set of minimum standards for heavy vehicles
- b. Establishing minimum heavy vehicle driver education and training standards
- c. Establishing higher standards for haulage route assessment and logistics, and
- d. Improving communication and levels of understanding around heavy vehicle safety with the public

## Mission

The mission of CLOCS-A is simple:

***To ensure the safest, leanest, and greenest construction vehicle journeys.***

## Goals

The primary goals of CLOCS-A are:

- Zero incidents including and collisions between construction vehicles and the community
- Increased productivity and efficiency
- Fewer heavy vehicle journeys
- Better planning of construction logistics
- Improved air quality and reduced emissions
- Reduced reputational risk



## 2 CLOCS-A Standards

### What is the CLOCS-A Standard?

Through the wider adoption of the CLOCS-A Standard across Australian construction projects and supply chains, it is expected that the risk of road trauma involving construction vehicles will be reduced and the efficiency of construction project logistics improved.

The CLOCS-A Standard shall be applied by stakeholders involved in the procurement and delivery of construction projects that are publicly funded.

All parties shall comply with the CLOCS-A Standard and maintain compliance to the Standard following receipt of gaining accreditation to the CLOCS-A Standard.

### How is the Standard Certified?

The CLOCS-A Standard is measured against existing models such as:

- National Heavy Vehicle Accreditation Scheme
- Trucksafe Accreditation
- CLOCS (UK)
- FORS (UK)

### Heavy Vehicle Standard

#### Tier Breakdown

##### Bronze

The Minimum Mandatory Standard for all heavy vehicles complying with CLOCS-A technical requirements. Measures and technologies that are relatively low cost and easy to implement.

##### Silver

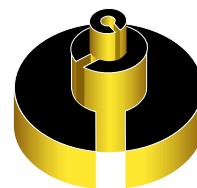
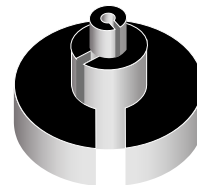
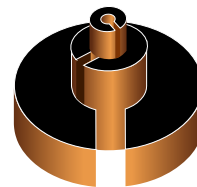
A higher standard of equipment is preferred for heavy vehicles complying with CLOCS-A technical requirements. Similar to UK CLOCS and broadly aligned to current NSW/Vic government major projects. Accreditation to Silver also requires prior accreditation to Bronze.

##### Gold

The highest standard of equipment that is being sought for heavy vehicles complying with CLOCS-A technical requirements. Encourages leading safety technologies and to future-proof vehicles. Accreditation to Gold also requires prior accreditation to Silver.

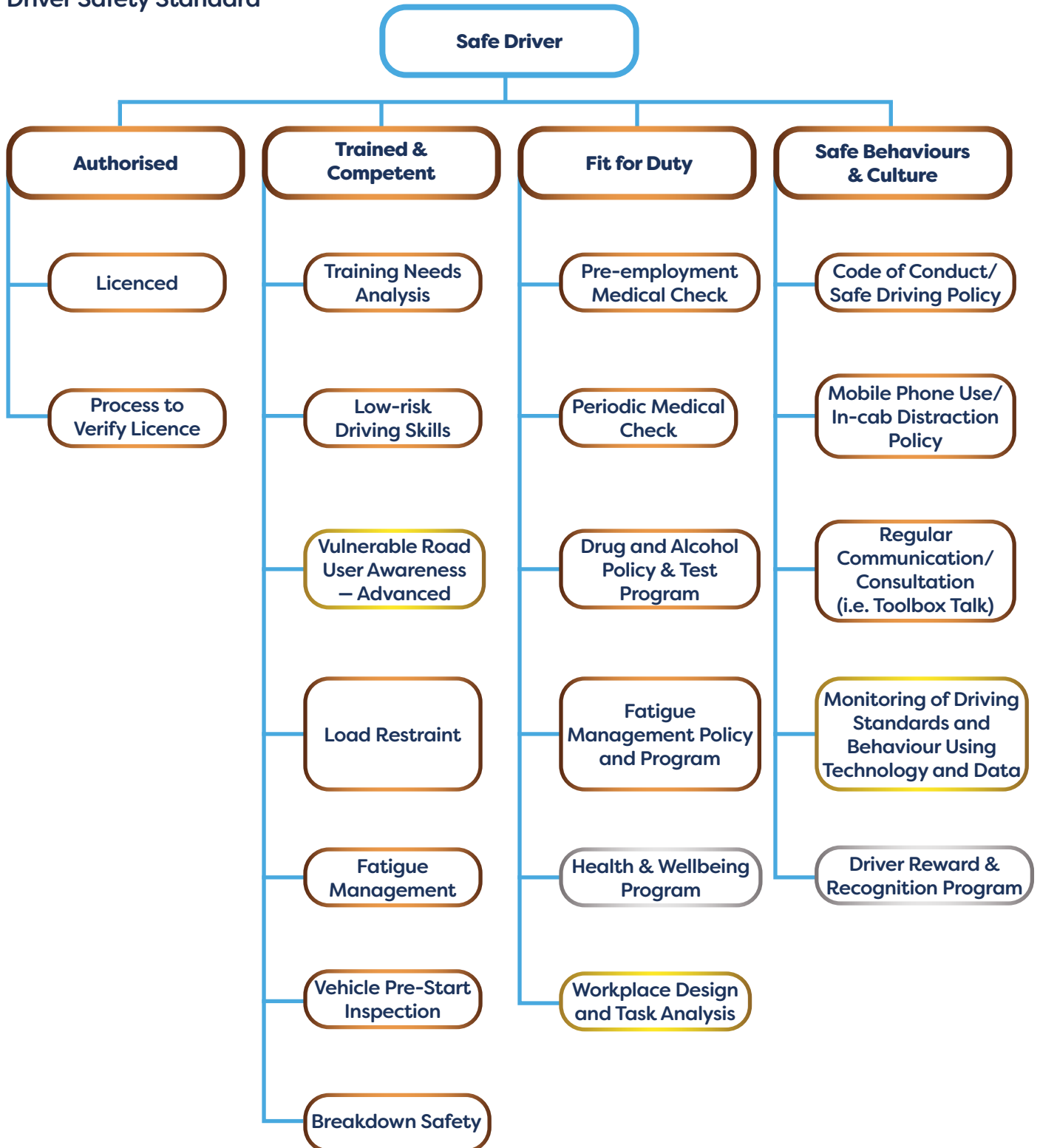
In addition to the equipment and systems that must be fitted to heavy vehicles for CLOCS-A compliance, the following items cannot be fitted:

- Bug deflectors on bonneted trucks – City and Urban Projects only
- Engine air intake hardware above bonnet level (on bonneted trucks) – City and Urban Projects only
- Large inappropriate bullbars – City and Urban Projects only
- Inappropriate sunvisors
- Overly large decals on windscreens
- Excessive windscreen or window tinting
- Inappropriate fitment of aftermarket accessories in the cab that restrict the driver's field of view



## 2 CLOCS-A Standards

### Driver Safety Standard



# 3 How to Join CLOCS-A

## How Do I Put the CLOCS-A Standard in My Contract?

### Procurement of Construction Contractors

Ensure contracts awarded to Construction Contractors specify that compliance to the CLOCS-A Standard shall be met by the Construction Contractor party that is appointed Principal Contractor. The Principal Contractor shall be responsible for ensuring that their transport supply chain and those of any other parties procuring transport supply for the project complies with CLOCS-A.

### Procurement of Transport Operators

Ensure, where engaging in contracts directly with a Transport Operator, contracts awarded to the Transport Operator specify compliance to the CLOCS-A Standard Level that must be met by the Transport Operator and their supply chain.

### Monitoring and Assurance

Verify CLOCS-A accreditation of the Principal Contractor and major transport subcontractors throughout the tender procurement phase and following through to the contract being awarded. Reports on CLOCS-A Accreditation status are required periodically throughout the project.

### Incident and Performance Reporting

Principal Contractors are required to report on transport-related incidents and verify that appropriate corrective and preventative actions are taken to prevent such recurrences.

### Communications and Engagement

CLOCS-A members will act as champions for the program to those who operate/interact with it. Safety branding will be visible on all site entrances. Primary contact details will be allocated and maintained. CLOCS-A members will engage the community across the life of the project.

## Example Procurement clauses:

To ensure that tenderers are aware of your CLOCS-A requirements at the earliest stage, include a preamble. For example:

*[ORGANISATION NAME] aims to promote safe and efficient site operations and associated fleet operations within our organisation's supply chain and in vehicle movements relating to our project and servicing our sites. We are committed to CLOCS-A and you are also required to comply with the CLOCS-A Standard as part of your contractual requirements on this project. This includes ensuring that all your own and third-party transport providers used to deliver this contract in all tiers of the supply chain also comply with the CLOCS-A Standard.*

Clearly set out what you expect of the candidates/tenderers and the evidence that is required to demonstrate their capability. For example:

*Following any substantiated complaint, repeated non-compliances, serious incidents or other circumstances brought to the attention of the CLOCS-A Managing Body, triggered audits can be conducted of [ORGANISATION NAME]. Where triggered audits identify failed compliance with the requirements of their accreditation, [ORGANISATION NAME] will be required to "show cause". Where [ORGANISATION NAME] fail to show cause, their accreditation may be suspended or terminated.*

## Entry Into the Program

Any organisation can apply to be a member. This will be facilitated through submitting an online membership form to the CLOCS- Managing Body.

Organisations seeking to demonstrate they meet the CLOCS-A Standard will need to apply for accreditation (become a member).

The CLOCS-A Managing Body will collect all necessary details from the application and send an initial self-assessment form for the applicant to complete within one month. CLOCS-A Accreditation shall remain active for a 12 month period.

Accreditation will need to be renewed yearly through either passing the Self-Assessment or a CLOCS-A re-accreditation Audit.

